

Gladstone Region Wellbeing
Data Report

2023



Gladstone Region engaging in action Together

Gladstone Region engaging in action Together (GRT) is a community-led, place-based, social change initiative with the vision of opportunity, equity and quality of life for everyone in our community.

The work of GRT is based on the foundation that children born into safe homes with happy, healthy parents are statistically more likely to have a happy, healthy life and access to employment and education opportunities.

Community voice informs the work at all stages with lived experience and stories of life in our region helping to contextualise insights drawn from statistical data.

Purpose

The Gladstone Region Wellbeing Baseline Data Report (2021 - former report) provides a snapshot of quantitative data identified as significant for the Gladstone Region community. Data included reflects where statistical comparison between the Gladstone LGA and Queensland has identified a difference. It provides a starting point for our community to measure progress over time to improved community wellbeing.

Data within the report represents the whole Gladstone Local Government Area (LGA) and does not identify where circumstances may vary for individual locations or communities within the region.

The Gladstone Region Wellbeing Data Report (2023 - this report) includes updated data and identifies changes since the Baseline Report was released, to support our community to maintain a responsive approach to escalating or emerging need and enable us to track improvements.

Parameters

Some parameters have changed since publication of the Gladstone Region Wellbeing Baseline Data Report (2021). These changes have been identified throughout the update.

Impacts of the COVID-19 Pandemic have had consequences for data collection in some cases.

Where datasets have not been updated since the 2021 Baseline Data Report, they have been omitted from the updated inclusions in the 2023 Data Report.



Our POPULATION

Gladstone had a population of 63,515 people in 2021. There was a 3.04% population growth from 2016 to 2021.

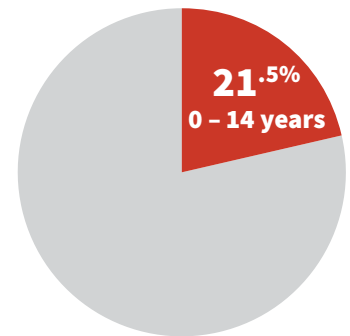
In 2021, Gladstone had higher birth rates and lower death rates compared to Queensland. Gladstone's birth rate had declined and the death rate had increased since 2016.

Gladstone's median age increased from 35 in 2016 to 38 in 2021, and is now consistent with Queensland.

2021	Gladstone (rate/1000)	Queensland (rate/1000)
Birth Rate	13.1	12.3
Death Rate	5.0	6.5

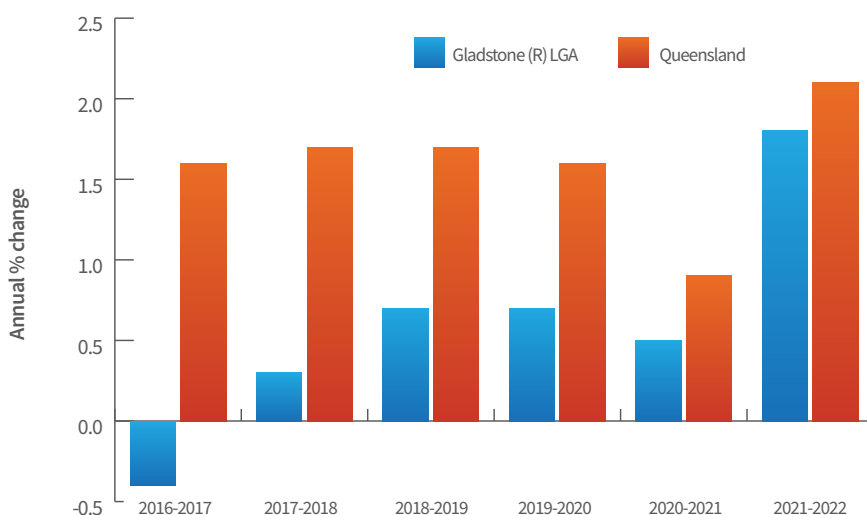


Age	Gladstone	%	Queensland	%
0-4 years	4,049	6.4	292,452	5.7
5-9 years	4,686	7.4	329,311	6.4
10-14 years	4,913	7.7	342,560	6.6



Between 2016 and 2021, there was a decrease in the number of children aged under 10 years old, and an increase in the number of children aged 10-14 years. In 2021, Gladstone continued to have a younger population compared to Queensland.

Estimated Resident Population Growth (ERP)



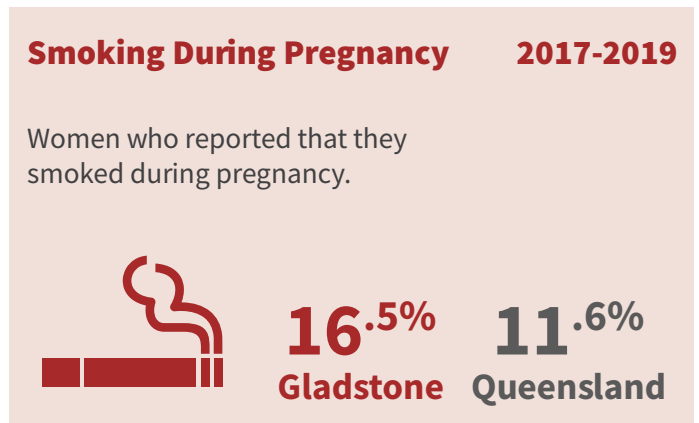
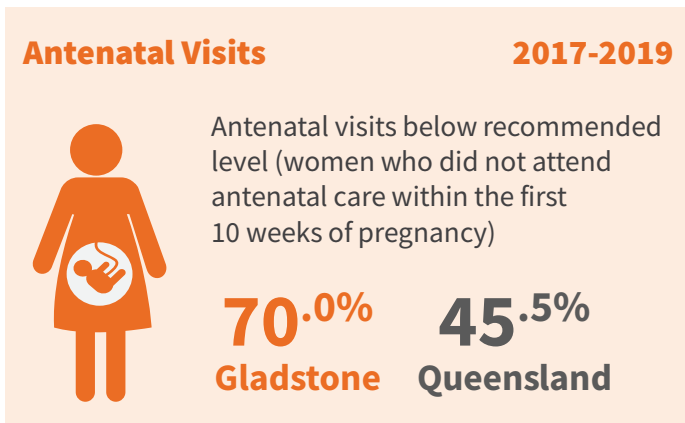
Our region's resident population was estimated to have increased by 1.8% in 2021-2022, although continuing to be lower than Queensland's population growth rate. The Gladstone Region experienced a net increase in annual population growth rate from 2017, following a period of declining population size in 2016-2017.

Population Projections

Our population is projected to increase by 17.81% between 2021 and 2041 with a projected 11,388 new residents.

Over the next 20 years, Gladstone is expected to see an ageing population with the largest population growth being in those aged 65 and over.

Pregnant Mothers HEALTH



Note: Parameters have changed from women who gave birth and who had their first antenatal care visit before 14 weeks gestation, to women who gave birth during this period and did not have an antenatal visit in the first 10 weeks of pregnancy.

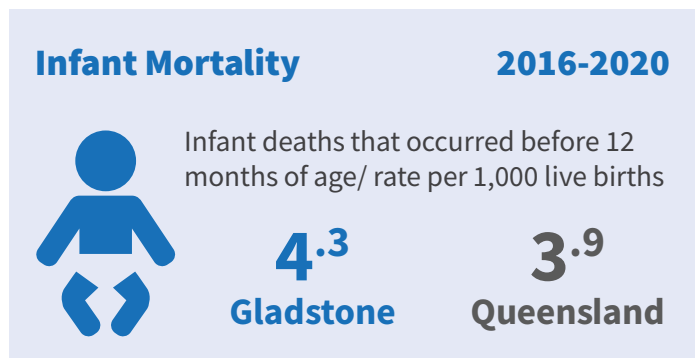
Note: Parameters have changed from women who gave birth and reported smoking tobacco in the first 20 weeks of pregnancy, to women who reported that they smoked during pregnancy.

The percentage of women not accessing antenatal care within the first 10 weeks of pregnancy in Gladstone was significantly higher than Queensland percentages in 2017-2019.

The percentage of Gladstone women smoking during pregnancy was significantly higher than for Queensland in 2017-2019.

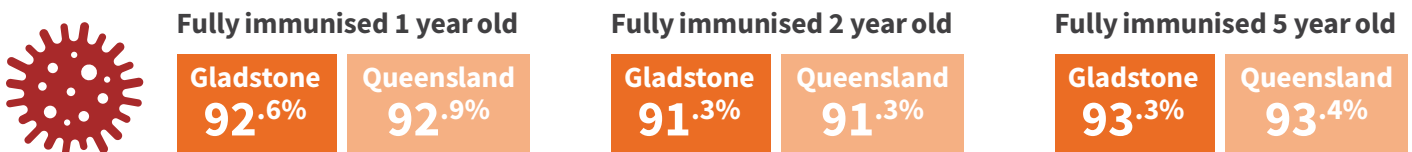
Baby HEALTH

The rate of infant mortality in the Gladstone Region had increased in the 2016-2020 period compared to the 2013-2017 period, to higher than the Queensland rate. The Queensland rate decreased in this same time period.



Child HEALTH

2022



In 2022, Gladstone continued to be behind Queensland for child immunisations at the one-year and five-year intervals and behind Queensland's target of 95% of children fully immunised at all milestones to the age of 5.

The percentage of children immunised at each milestone was lower in 2022 than 2018, across each of the three intervals, for both Gladstone and Queensland.

Child Readiness for SCHOOL

Pre-School Enrolments

2021	Gladstone %	Queensland %
4 year olds	38.6	21.8
5 year olds	5.3	3.5
4 & 5 year olds	21.7	12.5

More of our children were enrolled in pre-school than Queensland children in 2021.

Note: Care should be taken when interpreting preschool enrolments. Due to the COVID-19 pandemic, various restrictions were in place when the National Early Childhood Education and Care Collection (NECECC) was conducted.

Developmental Vulnerability in Children (AEDC)

2021	Gladstone %	Queensland %
Physical health and wellbeing	12.4	11.6
Social competence	10.7	10.6
Emotional Maturity	10.4	10.0
Language and cognitive skills (school-based)	12.1	8.4
Communication skills and general knowledge	7.2	9.1

Children in Gladstone were more developmentally vulnerable than children across Queensland in four of the five domain indicators in 2021. Since 2018 developmental vulnerability had increased in physical health and wellbeing, and language and cognitive skills in Gladstone children. Children in Gladstone were less vulnerable than Queensland children in physical health and wellbeing and social competence in 2018 surpassing Queensland by 2021 in these domains.

The Australian Early Development Census (AEDC) utilises the 'On Track on all five domains' indicator to reflect changing outcomes and strengths of children in our community.

'Developmentally on track children are considered to be developing well. As such, it is desirable to see the percentage of children who are on track increase with each new wave of the AEDC collection' (AEDC 2021).

50.6% of children in the Gladstone region were developmentally on track on all five domains, compared to 51.4% of Queensland children in 2021. This is a decrease from 51.2% of Gladstone children on track on all five domains in 2018.

Transition to School Indicators (AEDC)

2021	Gladstone %	Queensland %
Child has parent/ caregiver who are actively engaged with the school in supporting their child's learning	90.4	93.3
Child is regularly read to/encouraged in reading at home	81.7	88.0

The percentage of children whose parents were actively engaged with the school in supporting their child's learning in Gladstone saw a positive increase in 2021 compared to 2018, although less parents were engaged in their child's learning in our region than across Queensland.

The percentage of children in Gladstone being regularly read to or encouraged to read at home decreased in 2021 compared to 2018. Fewer of our children were being read to regularly at home in 2021 than Queensland children.

Note: Transition indicators have been calculated based on the 'True' values. This includes both the 'Very True' and 'Somewhat True' percentage values.

Our YOUTH

School Attendance

From 2019 to 2022 there was a significant decrease in attendance across most schools in the Gladstone region.

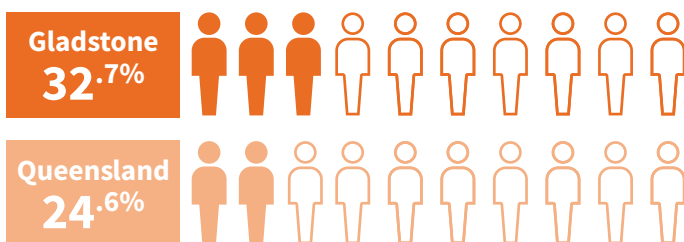
Note:

Aggregated data reviewed for attendance of primary, combined and secondary state schools. No attendance data was collected in 2020 due to COVID-19 Pandemic impacts.

Highest Schooling Level

2021

Years 9-10



Years 11-12



There was an increase in the percentage of students that completed Year 11 and 12 in the Gladstone Region in 2021 compared to 2016. Queensland percentages also increased in 2021. Our completion of Year 11 and 12 continues to be below Queensland.

Qualifications

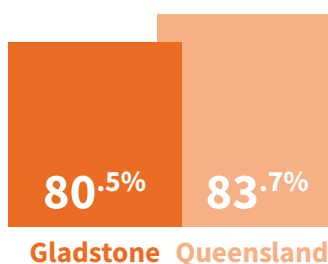
2021	Gladstone %	Queensland %
Bachelor Degree (BA) and above	12.0	21.9
Advanced Diploma and Diploma level	6.9	9.4
Certificate level IV	4.0	3.6
Certificate level III	22.5	15.3
Year 12	13.8	15.5
Year 11	5.1	3.9

There were increases in higher educational attainment in our region between 2016 and 2021. Queensland percentages also increased in 2021. Our region continued to have a higher rate of completion of vocational certificates than Queensland in 2021.

Youth Participation

2021

Earning or Learning (15-24 years)



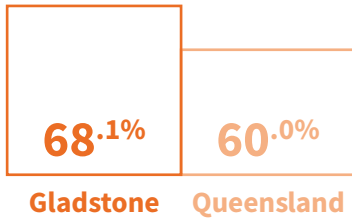
Youth participation saw a positive increase in our region in 2021 compared to 2016, although our region continues to be behind Queensland in the percentage of youth participating in earning or learning activity.

Adult HEALTH

2019-2020

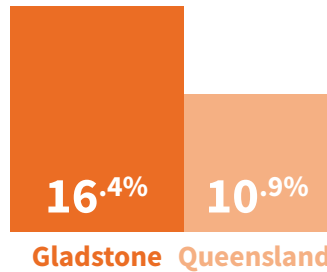
BMI

(overweight/obese 18+ years)



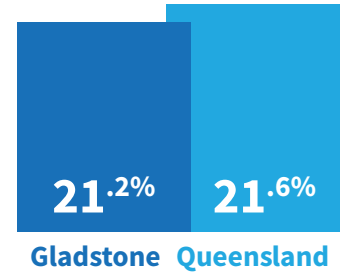
Daily smokers

(18+ years)



Alcohol

(Lifetime Risky Drinking 18+ years)

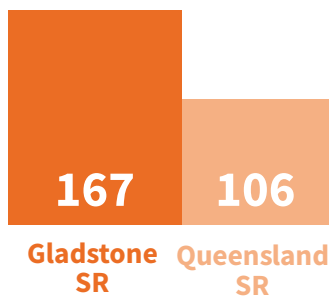


Note: Parameters have changed from the percentage of obese persons with BMI of 30 or greater, to percentage of persons with BMI of 25 or greater to include those overweight and/or obese.

Note: Parameters have changed from the percentage of current smokers (including daily, weekly and other smoking status), to the percentage of daily smokers

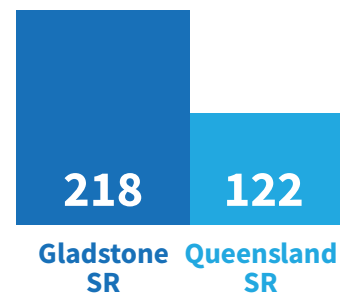
Mental Health

Emergency Department Presentations, by principal diagnosis Mental and Behavioural disorders



Avoidable Death

Suicide and Self-inflicted Injuries, 0-74 years (2016-2020)



There was a greater percentage of persons aged 18 years and over who were overweight and/or obese in Gladstone compared to Queensland in 2019-2020.

The percentage of daily smokers aged 18 years and over was significantly higher than Queensland in 2019-2020.

The percentage of people who had lifetime risky alcohol consumption (exceeding guidelines) had increased in 2019-2020 in Gladstone compared to 2017-2018, similar to the change recorded for Queensland.

There was a significant increase in emergency department presentations for mental and behavioural disorders in 2019-2020 compared to 2017-2018 and continued to exceed the Queensland ratio.

Avoidable death due to suicide and self-inflicted injuries in those aged 0-74 years old in Gladstone increased significantly and exceeded the Queensland ratio in 2016-2020 period.

DFV Data

Gladstone (Court) Domestic Violence Orders (DVO) initiating applications.

Year	2020-21	2021-22	2022-23
Count	596	546	549

Domestic violence orders were highest during the 2017-2019 period followed by a period of decline. There was a slight increase of applications in 2020-2021, though rates have since decreased and remained steady to 2023.

Our FAMILIES

Household Income

2021	Gladstone %	Queensland %
Less than \$650 total household weekly income	18.8	16.4
More than \$3,000 total household weekly income	21.3	21.9

There was a decrease in the percentage of Gladstone families earning less than \$650 per week, though Gladstone continued to have a higher percentage of households with a weekly income of less than \$650 than Queensland in 2021.

There was an increase in the percentage of Gladstone families earning more than \$3,000 per week in 2021, although the percentage for Queensland households significantly grew to exceed the Gladstone percentage.

This is consistent with a change in median household weekly incomes. In 2016, Gladstone household incomes exceeded both Queensland and Australian percentages. By 2021, Gladstone had lower median household incomes than Queensland and Australia.

Family Income

2021	Gladstone %	Queensland %
Families with Children where no parent is employed	13.9	11.4
Single parent receiving welfare (Parenting Payment- Single)	1.9	1.2
2022	Gladstone %	Queensland %
Children in low income, welfare-dependent families	18.8	13.8

There was a decrease in the percentage of families with children with no parent employed in Gladstone, though Gladstone continued to have a higher percentage than Queensland in 2021.

The percentage of the Gladstone Region population receiving the Single Parenting Payment increased in 2021 and continued to exceed Queensland.

There were significant decreases in the percentage of children in low income, welfare-dependent families in Gladstone and Queensland in 2021 compared to 2016, though Gladstone continued to be higher than Queensland.

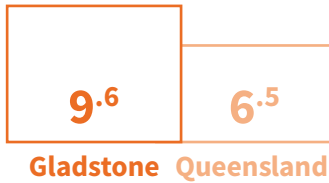


Gladstone Region EMPLOYMENT

Government Payments Quarter March 2023

Department of Social Service Payments, Jobseeker Payment

Rate / 100

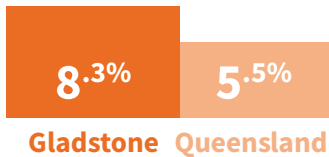


The rate of Jobseeker payments in Gladstone was higher than Queensland in the March quarter of 2023.

Note: From 20 March 2020, JobSeeker Payment replaced Newstart Allowance, Bereavement Allowance and Sickness Allowance.

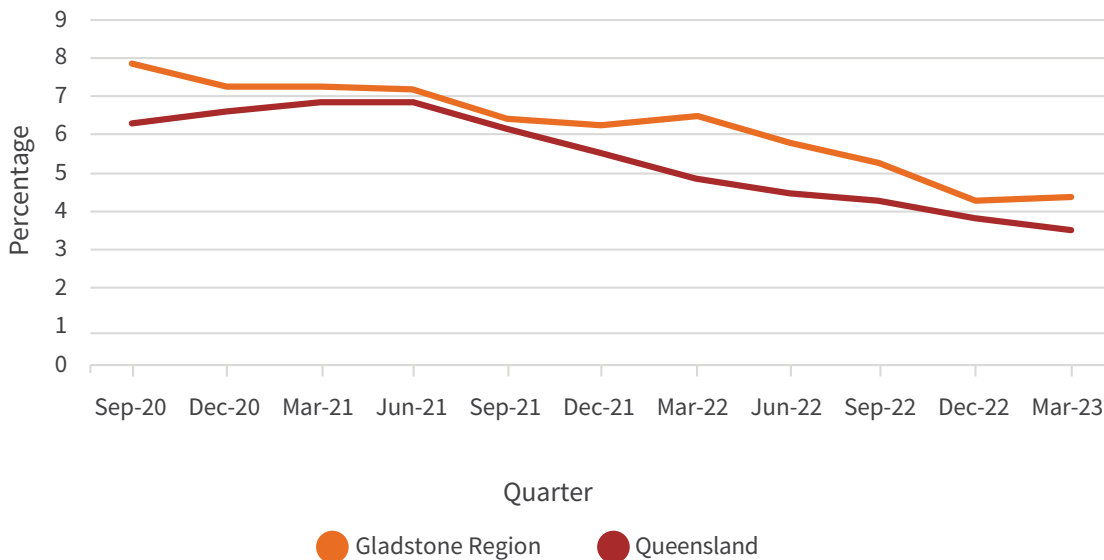
Government Payments June 2022

People receiving an unemployment benefit long-term (for longer than 6 months)



There was an increase in the percentage of people in Gladstone receiving unemployment benefits long-term from 2017 to 2022, with Gladstone continuing to have a higher percentage than Queensland.

Unemployment



In March 2023, 1,621 people were unemployed in our region with an unemployment rate of 4.4% compared to a rate of 3.8% for Queensland.

From July 2020 to March 2023, the unemployment rate steadily declined in the Gladstone Region, while continuing to be higher than Queensland.



Gladstone Ports Corporation's East Shores Parklands, Feast on East Markets



“

Our community enjoys great strengths and opportunities. Understanding where to focus our efforts, to do even better in improving community wellbeing, will help make these opportunities available to everyone.

”

CONTACT

(07) 4970 7382 | admin@gladstoneregiontogether.org.au

